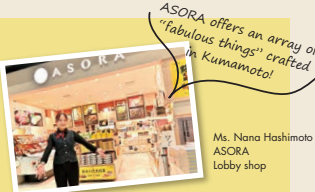


vol.1 ASORA Lobby shop
1F Passenger Terminal Building
Hours/ 6:30 - Last arrival
Phone/ 096-232-2442

Yokamon, Miyagemon
YOKAMON MIYAGEMON



Winter exclusive Yummy
A chocolate-covered twist on Kumamoto's famous bean confection, Suzume no Tamago. The sweet chocolate paired with the sweet-savory soy flavor and irresistibly crunchy texture make them incredibly moreish!

Suzume no Choco Oji
[Wata Corporation]
12 packets, ¥1,296 (incl. tax)
Shelf life 1
120 days at room temperature



New!
Gyorai, a fiery tsukemen noodle shop in Kumamoto, has gained a reputation for its irresistible flavors, featuring a rich blend of seafood and pork bone broth paired with thick, chewy noodles. Enjoy their delightful noodles in the comfort of your home.

Tsukemen Gyorai [Yutaka]
3 servings, ¥1,620 (incl. tax)
Shelf life 1
90 days at room temperature



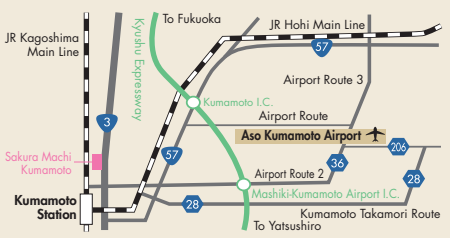
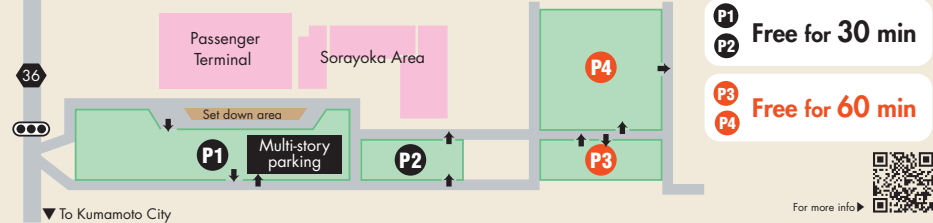
Wildly popular!
The chocolate fondants are made by encasing rich, melting chocolate in a cocoa-flavored dough, made with Aso-Oguni Jersey cow's milk and flour produced in Kumamoto Prefecture. Each piece is individually wrapped, making it an ideal gift.

ASO BATON [Kakindo]
Box of 6, ¥1,199 (incl. tax)
Shelf life 1
90 days at room temperature

Parking

Kumamoto Airport opened a new parking section (P2) in December 2024, increasing the total number of parking lots to four (P1 to P4). P1 and P2 are located closer to the passenger terminals and the Sorayoka Area, offering free parking for up to 30 minutes from the time of entry. In contrast, P3 and P4 provide free parking for up to 60 minutes.

Please plan ahead, as parking lots will be busy during peak holiday periods, such as spring breaks and weekends.



- Approx. 60 mins by car from JR Kumamoto Station
- Approx. 15 mins by car from Kyushu Expressway Mashiki-Kumamoto Airport I.C.
- Approx. 50 mins by airport limousine bus from Sakura Machi Kumamoto

Please use public transportation, including the airport limousine service, as airport parking will be limited during the weekends.

Find out more about accessibility, e.g.

Kumamoto Prefecture Events Calendar

Month	Event
Feb - Mar 2025	6 Takahashi Inari Shrine Hatsuma Festival (Kumamoto)
	6 Kumamoto Castle Inari Shrine Hatsuma Festival (Kumamoto)
	13 Yatsuyama Shrine Spring Festival (Arao)
	16 Kumamoto Castle Marathon 2025 (Kumamoto)
February	23 Yokojima Ichigo Marathon / Tamana Idaten Marathon 2025 (Tamana)
Feb 1 - Mar 31	Hitoyoshi Kuma Hina Festival (Hitoyoshi Kuma)
Feb 7 - Mar 1	Every Friday and Saturday: Yamaga Bamboo and Wagasa Lantern Festival (Yamaga)
March	8 Amakusa Pearl Line Marathon (Kamiamakussa)
	20 Anzu no Oka Marathon (Yamaga)
	16 Hifuri Shinji (Aso)

*Events are subject to weather conditions, etc.

vol.4

Aso Kumamoto Airport News Letter

Sorayoka

そらよか
2025.1
WINTER

A GIANT CARTOON MURAL
100 SCENES FROM ONE PIECE GREAT PIRATE COLOSSEUM

FEATURE: Sorayoka Dining

YOKAMON MIYAGEMON: ASORA Lobby shop

English



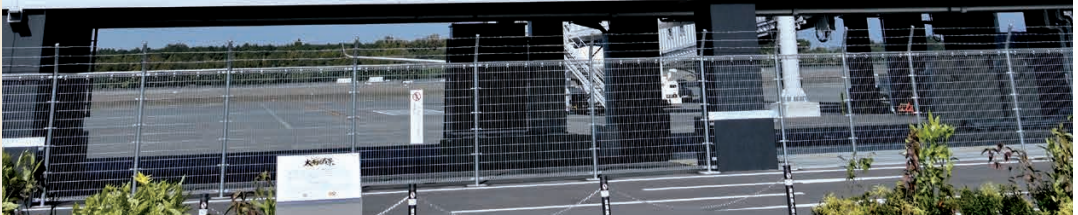
简体中文



繁體中文



한국어



Sorayoka is the public relations magazine of Aso Kumamoto Airport in Mashiki, Kumamoto Prefecture. The moniker is a coined term that combines "sora," meaning sky, and "yoka," which means good in the Kumamoto dialect; the phrase also means "that's good!"

©尾田栄一郎 / 集英社

QR Code is a registered trademark of DENSO WAVE INCORPORATED

ONE PIECE Kumamoto Reconstruction Project

The new giant cartoon mural

100 SCENES FROM ONE PIECE

GREAT PIRATE COLOSSEUM!



©尾田栄一郎／集英社

A massive cartoon mural titled 100 Great Pirate Scenes, featuring characters from the popular manga series ONE PIECE, has been installed in the newly developed Sorayoka Park area at Aso Kumamoto Airport. This mural is a new creation by Eiichiro Oda, the manga artist from Kumamoto Prefecture and the original author of ONE PIECE. The mural measures approximately 18 meters in width and 5 meters in height. This initiative is part of the ONE PIECE Kumamoto Reconstruction Project, a collaboration between Kumamoto Prefecture and ONE PIECE aimed at promoting recovery efforts following the Kumamoto Earthquake. The mural highlights characters selected in the top 100 of the first ONE PIECE Character World Popularity Poll, which was held to commemorate the 1,000th serialization in Weekly Shonen Jump. An additional attraction has been added to the airport, symbolizing creative recovery.



The plaque in Sorayoka Park explains the mural's background.



The unveiling ceremony took place in December 2014 and was attended by all those involved.



Kumamon, dressed as the protagonist Luffy, also came to celebrate. ©2010 熊本県 ©マモン



Kinkaku & Kunkaku Burger Steaks

¥3,180 [Incl. tax]

Kinkaku is made by marinating Japanese beef and Iwate-brand Shirogane pork in a house-made salted koji. Kunkaku, on the other hand, is prepared using a unique cold-smoking technique that enhances its flavor. Both dishes are known for their rich flavors, succulence, and tenderness.

- 1 Kinkaku & Kunkaku Burger Steaks
- 2 Kakunoshin Burger Steaks



chocoZAP
Aso Kumamoto Airport branch
⌚ 7:00 - 21:00
Nonmembers can access the facilities for a fee of ¥550 [incl. tax] per visit.



Kumamoto Mont-Vert Pork Loin Steak with ginger butter sauce (served with rice)

¥2,178 [Incl. tax]

This regional dish features Mont-Vert pork, a brand of pork raised on a farm in Minamata, Kumamoto Prefecture. It is appreciated for its unique sweetness and umami flavor. The rich ginger butter sauce tantalizes the tastebuds.

- 1 Royal Host
- 2 Kumamoto Airport



Sorayoka Dining

The Sorayoka area, which opened last year, is themed around "an airport experience for all visitors to enjoy." Below are some must-try dishes from Sorayoka Dining, where you'll find a diverse array of restaurants.



Tosho Hansuji Hanniku Beef Noodles

¥980 [Incl. tax]

The beef noodles are generously topped with various beef cuts, including beef tendon, and are served in a soy sauce base. The dish features a mild spiciness and a refreshing aroma that is likely to become a favorite. Don't forget to try the drinks from Milksha, which has approximately 500 stores worldwide.

- 3 Milksha ft. Ichiryuniji 1624



Byaki Gozen served with horse-meat sashimi

¥4,800 [Incl. tax]

The sumptuous meal allows you to savor lean and neck horse meat in sashimi form, along with grilled horse meat galbi, marbled cuts, hanging tender, diced pieces, and offal. Each cut highlights the appeal of horse meat, allowing you to enjoy its deliciousness fully.

- 4 Suganoya



Amakusa Daio Kuro Ma-yu-gake

¥850 [Incl. tax]

The umami of the locally grown Amakusa Daio chicken from Amakusa in Kumamoto, paired with the refreshing taste of onions and sweet vinegar, along with the savory aroma of garlic in Kumamoto's famous "Kuro Ma-yu," is sure to whet your appetite. Additionally, the seaweed from the Ariake Sea and the rice from Aso in Kumamoto are exceptional.

- 5 Po-Tama

